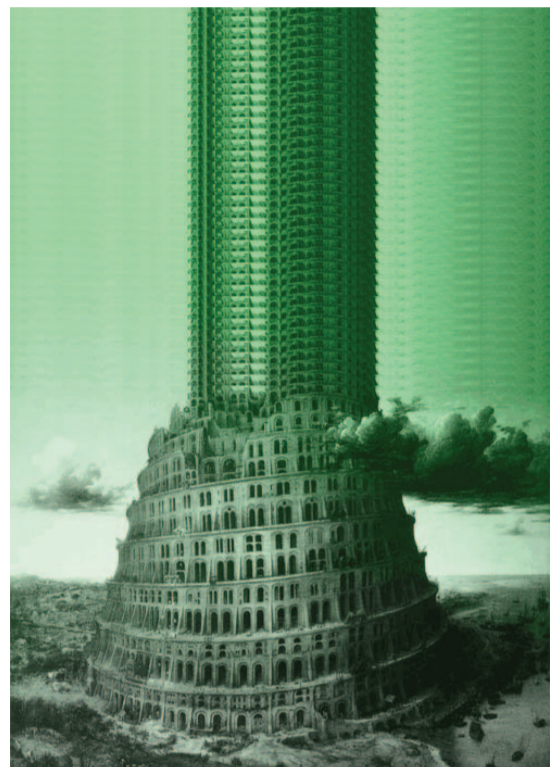


MISLI PROSTOR / THINK SPACE FROM GEOPOLITICAL TO ECOLOGICAL BORDERS

THE CONCLUSION OF THE SECOND COMPETITION OF THE THINK SPACE CYCLE LED TO THE ANNOUNCEMENT OF THE THIRD ONE, ENTITLED ECOLOGICAL BORDERS

MISLI PROSTOR / THINK SPACE OD GEOPOLITIČKIH DO EKOLOŠKIH GRANICA

ZAKLJUČIVANJEM DRUGOG NATJEČAJA CIKLUSA THINK SPACE PREDSTAVLJEN JE I TREĆI, POD NAZIVOM EKOLOŠKE GRANICE



U utorak, 31. svibnja, u prostorima Društva arhitekata Zagreba predstavljeni su pobjednici drugog međunarodnog natječaj... (Introductory text about the competition winners and the 'Think Space' program.)

O NATJEČAJU GEOPOLITIČKE GRANICE

Drugi natječaj u ovogodišnjem ciklusu - Geopolitičke granice - otvoren je 15. ožujka, a natječajni zadatak osmislio je Teddy Cruz američki arhitekt porijeklom iz Gvatemale i direktor arhitektonске prakse Estudio Teddy Cruz iz San Diega... (Detailed text about the 'Geopolitical Borders' competition.)

Politički ekvator je uvod u mnoge od lokalnih radikalizama, razasutih diljem kontinentata, sugerirajući da će se neki od najrelevantnijih projekata za unapređenje društveno-ekonomske ukljućivosti roditi ne u zonama obilja, već u zonama oskudice... (Text discussing the political equator and the concept of zones of abundance vs. scarcity.)

Natječajni zadatak Geopolitičkih granica, koji je osmislio Cruz, pozvao je arhitekate i dizajnere na promišljanje Nove globalne granice kroz otkrivanje sukoba kao alata uspostavljanja novih modela života. (Text about the competition brief and the goal of creating new models of life.)

KOMENTAR ŽIRATORA

Dojmila me se raznolikost geografija, mjerila i postupaka koja je popratila radove. No istovremeno me iznenadila brojnost radova koji su predlagali isti pristup: stvaranje neutralnih, "slobodnih" autonomnih područja u/među sukobima. (Comments by juror Teddy Cruz on the submissions, highlighting common themes of neutrality and autonomy.)

Zbog kratkog trajanja natječajja, odlučio sam se naprosto usredotočiti na traganje za poticajnim "prije-poslije" dijagramima koji bi mogli predočiti takve institucionalne preobrazbe te njihove vizualne i fizičke posljedice. (Text explaining the focus on 'before-after' diagrams to visualize institutional changes.)

Premda sam tražio za poticajnim prikazima koji bi mogli aktivirati nove načine poimanja graničnih područja, također sam tražio i za njihovom izvedbenom dimenzijom, stupnjem predlaganja alternativnih društveno-političkih i ekonomskih po... (Text discussing the practical dimensions and alternative socio-economic models.)

stupaka. Najdramatičniji prikazi bili su podržani inteligentnim procesima pa su tako moji kriteriji za ocjenjivanje uključivali: jedinstvenost inteligentnosti dijagrama (prije-poslije), dubinu proučavanja i grafičku kakvoću istraživanja. (Text describing the criteria for evaluating the submissions, focusing on intelligence and graphical quality.)

Dva su se projekta izdvojila: Granični arhipelazi uskih prostora i Zajedničke vizije; slučaj Prespanske regije. Oba su iznjedrila inteligentne dijagrame koji su omogućili drukčiji konceptualni pogled na područja kojima su se bavili: kako na amplifikaciju mediteranskih otoka koji su postali kritični pragoi imigracije između dvaju kontinentata, konsolidirajući ih u jedinstveni konceptualni sustav, novi arhipelag s alternativnim političkim posljedicama; tako i na vizualizaciju prirodnih praznih prostora diljem država, u obliku armature poimanja elastičnih ekoloških i društveno-ekonomskih odnosa i razmjena. (Text describing the two winning projects: 'Border Archipelagos' and 'Common Visions'.)

Uz ta dva nagrađena rada, pohvalio sam tri rada: Prvi, Metropolitička praznina, zasniva se na iznimno temeljitom istraživanju te je jedan od vizualno najdopjmljivijih dokumenata. (Text praising other notable submissions, including 'Metropolitan Void') and discussing the importance of thorough research and visual clarity.)

Posljednja dva pohvaljena rada zapravo su izvaci iz dvaju radova: Mediteranskog velikog praska i Mediteranske Unije. Kao kad bi njihovi zasebni naslovi tvorili jedinstveni manifest, te su jedini slike izlučene iz njihovih procesa zbog svoje provokativne poruke. (Text praising the 'Mediterranean Big Bang' and 'Mediterranean Union' projects for their collaborative and provocative nature.)

POLITIČKI EKVATOR JE UVOD U MNOGE OD LOKALNIH RADIKALIZAMA, RAZASUTIH DILJEM KONTINENATA, SUGERIRAJUĆI DA ĆE SE NEKI OD NAJRELEVANTNIJIH PROJEKATA ZA UNAPREĐENJE DRUŠTVENO-EKONOMSKE UKLJUĆIVOSTI RODITI NE U ZONAMA OBIILJA, VEĆ U ZONAMA OSKUDICE

TEDDY CRUZ - O NATJEČAJU EKOLOŠKE GRANICE

Predstavljen je i treći po redu natječaj iz ciklusa Misli prostor / Think Space - Ekološke granice, žiratora François Rochea. Natječaj je objavljen 17.5.2011, predaja radova je 28.6.2011, a objava rezultata 12.7.2011. (Text by Teddy Cruz introducing the 'Ecological Borders' competition.)

NEKONFERENCIJA - IZVAN GRANICA

Ovom prilikom najavljen je i završni skup ciklusa Misli prostor / Think Space, Nekonferencija - Izvan granica od 18. do 20. 11. 2011. (Text announcing the final event of the competition cycle.)

Ova nekonferencija zamišljena je kao kruna cijelog ciklusa, kako bi se naglasilo i osnažilo odjek provedenih konceptualnih arhitektonskih natječajja. (Text describing the 'Off-Borders' conference as the culmination of the cycle.)

Teddy Cruz, žirator 2. natječajja



Francois Roche, žirator 3. natječajja

MISLI PROSTOR / THINK SPACE FROM GEOPOLITICAL TO ECOLOGICAL BORDERS THE CONCLUSION OF THE SECOND COMPETITION OF THE THINK SPACE CYCLE LED TO THE ANNOUNCEMENT OF THE THIRD ONE, ENTITLED ECOLOGICAL BORDERS

On Tuesday, May 31st, the premises of the Zagreb Architects' Society saw the announcement of the winners of the second international competition - Geopolitical Borders - and the announcement of the third competition in a row - Ecological Borders - within the yearly topic of Borders, within the Misli prostor / Think Space Programme, as well as the announcement of the first Misli prostor / Think Space Non-Conference entitled 'Outside of the Borders'. (Text describing the event on May 31st.)

ABOUT THE GEOPOLITICAL BORDERS COMPETITION The second competition in this year's series - Geopolitical Borders - was opened on March 15th, and the competition brief was conceived by Teddy Cruz, an American architect originally from Guatemala and the director of the estudio teddy cruz architectural prac-

tice in San Diego, USA, whose work stems from the research formulated around the notion of the Political Equator. The submission deadline was April 26th 2011, and the results were announced on May 10th 2011 on the official Think Space Programme website.

The Political Equator is an introduction into many local radicalisms, spread out through the continents, which suggests that some of the most relevant projects for enhancing socio-economic inclusivity will not be conceived in zones of affluence, but rather in zones of poverty, due to some conflict about geopolitical borders, natural resources or marginalised communities.

The Geopolitical Borders competition brief, devised by Cruz, called on architects and designers to ponder a New Global Frontier by revealing conflict as a tool for establishing new models of coexistence.

JUROR'S COMMENT I appreciated the variety of geographies, scales and procedures that accompanied the submissions. But at the same time I was surprised at the quantity of entries that were proposing the same approach: the production of neutral, "free" autonomous zones in-between the conflict. In general, I have grown skeptical of these autonomous zones that only tend to either ghettoize the problem or through their exception remain islands within the archipelago of atomized

environments that do little to subvert the existing hegemony of institutional political and economic power. My predilection has been for practices of encroachment that infiltrate themselves into the rigidity of institutions in order to re-configure existing protocols - and in so doing, suggest new spatial and infrastructural organizations.

Because of the brevity of the competition's time period, I wanted to simply focus on seeking compelling "before-after" diagrams that could suggest such institutional transformations and their visual and physical consequences. Nevertheless, I welcomed many attempts to transcend the "diagram" and investigate its unfolding within the specificity of architectural schemes.

Also, while I sought compelling images that could trigger ways to re-imagine border regions, I was also seeking their operational dimension, the degree by which they would suggest alternative socio-political and economic procedures. The most dramatic images were backed by intelligent processes and therefore my criteria for evaluation included the uniqueness of the diagram's intelligence (before-after), the depth of the research and the graphic quality of the investigation.

Two projects came forward: 'Border Archipelagos of Narrow Spaces' and 'Common Visions: The Case of Prespa Region.' Both produced intelligent diagrams

that enabled a different conceptual view of the territories they both engaged: whether the amplification of the Mediterranean islands that have become the critical immigration thresholds between two continents, consolidating them into one conceptual system, a new archipelago with alternative political consequences; or the visualization of natural vacant spaces across nations as armatures to imagine more elastic ecological and socio-economic relationships and exchanges. Also I was interested in the way both of these projects moved from broad conceptual and territorial scales to the specificity of local ecologies and city spaces. This simultaneous engagement of the large and the small, the top down and the bottom up, the abstract and the specific is essential to transcend the ideological divide across the institutions of architecture and urbanism.

In addition to these two projects, I selected three mentions: The first one "Metropolitan Void" was backed up by a very rigorous research and was one of the most visually compelling documents. It took the discussion of geo-political borders to the very scale and contestation of the metropolitan. The most important image from this research, the recuperation of the forest as a mediating space that frames the growth of the city by producing a differential "in-between" resonated with many other entries that sought a "free-

zone" of exchange and political autonomy. But in my mind the green zone needed to have more complex gradations of green, maybe even tinted with a bit of red: The democratization of space needs to mean more than a top down gesture that emblemize the re-instatement of a new politics of the state, through absolutist architectures. The democratization of space and of borders themselves, and hopefully of a new conception of the political, is an inclusive, contested and agonistic process, where consensus and dissent, the planned and the unplanned are in perpetual tension.

The final two mentions, were actual excerpts from two entries: Mediterranean Big Bang and Mediterranean Union. As if their separate titles composed a unified manifesto, these images were extracted from their processes as singularities because of their provocative message. One shows a dramatic view of a mediterranean water-less landscape, fusing North Africa with Europe. The second image is, in a way, one that has been in our collective imagination for a while: the mediterranean as a continent, field, elongated - and permeable - circumambulatory boundary where the vectors of force that have shaped it are not inland but on its edges producing a regional consortium of interconnected points. These images suggest an idea that is pressing in our time: that a point of departure to re-imagine geo-political borders today begins by

NAGRAĐENI RADOVI NATJEČAJA GEOPOLITIČKE GRANICE

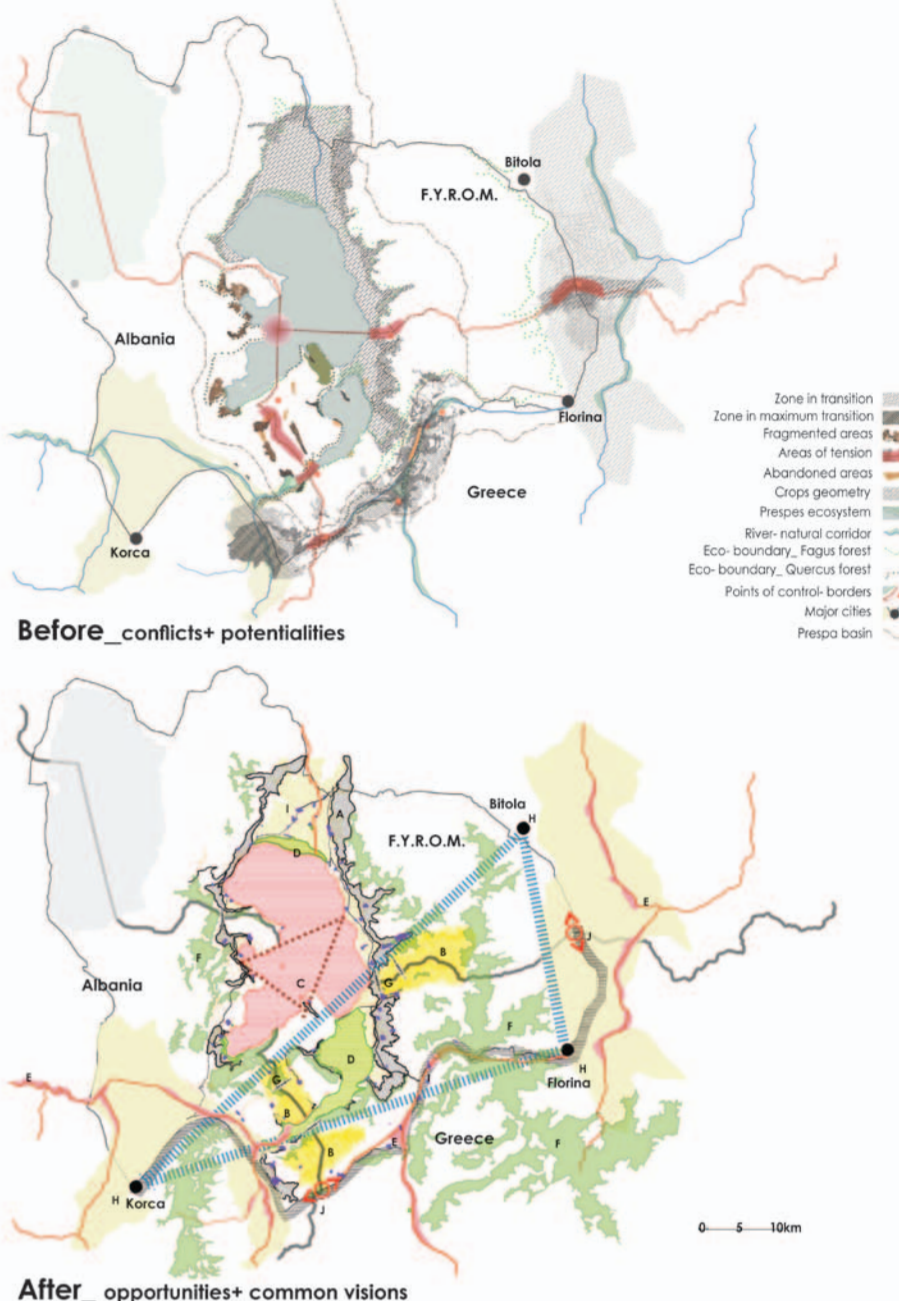
I. NAGRADA (A) / THE 1st PRIZE (A) Border Archipelagos of the Narrow Passages / HR

AUTORI / AUTHORS Konstantinos Papadimitrakopoulos, Grčka



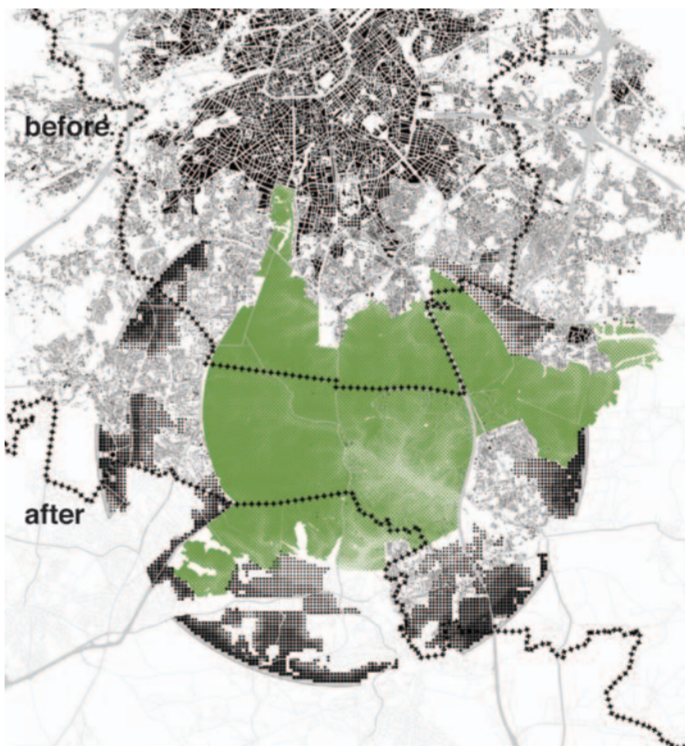
I. NAGRADA (B) / THE 1st PRIZE (B) Common Visions: The Case of Prespa Region / HR

AUTORI / AUTHORS Despoina Gkirti, Grčka Eftymios Dimopoulos, Grčka



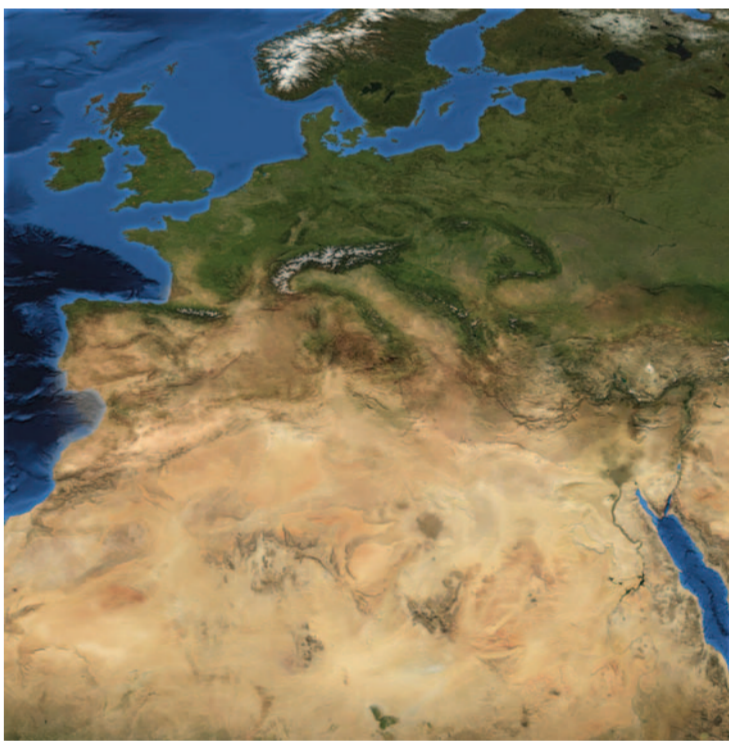
PRIZNANJE 1 / ACKNOWLEDGMENT 1 Metropolitan Void / HR

AUTORI / AUTHORS Rémi van Durme, Belgija Denis Glauden, Belgija



PRIZNANJE 2 / ACKNOWLEDGMENT 2 Mediterranean Big Bang / HR

AUTORI / AUTHORS Fatima Ruiz, Francuska Martin Coustenoble, Francuska Watter Libertino, Italija Giulia Marchi, Italija



PRIZNANJE 3 / ACKNOWLEDGMENT 3 Mediterranean Union / HR

AUTORI / AUTHORS Adrian Lahoud, Australija Samuel Schwarzbord, Australija



acknowledging the socio-economic and ecological co-dependance and co-existence of these divided territories and regions.

TEDDY CRUZ - ABOUT THE ECOLOGICAL BORDERS COMPETITION The third competition in the Misli prostor / Think Space cycle, Ecological Borders, was announced on May 17th 2011, with François Roche as the juror. The submission deadline is June 28th 2011 and the results will be announced on July 12th 2011. (Text by Teddy Cruz about the competition.)

NON-CONFERENCE - 'OUTSIDE OF THE BORDERS' The final conference of the Misli prostor / Think Space cycle was announced as the Non-Conference - 'Outside of the Borders', to be held between November 18th and 20th 2011 in Zagreb. The Non-Conference 'Outside of the Borders' is conceived as the final gathering of the programme's participants, an award-giving ceremony for the winners of the four international competitions within the programme's yearly cycle, and an exhibition of submitted works, both awarded and not.

The 'Outside of the Borders' Non-Conference is not a typical conference, but a series of highly interactive sessions for about 300 participants who will actively and on an equal footing discuss topics and issues related to the closed competitions. The first Think Space Non-Conference will give the participants and winners of the four international competitions a chance to meet world-famous architects, the guest curator and the jurors in Zagreb. Through personal meetings and group-sessions, they will jointly explore the yearly theme, addressing each of the four scenarios with special attention.

This non-conference, conceived as the crown of the entire cycle, which is to emphasize and strengthen the reach of the conceptual architectural competitions which will have been completed, it simultaneously improves the visibility of the participants, the winners, the guest curator and the jury, as well as the organizations behind the competition. On the other hand, it draws its programmatic power from the very competitions and, since they are its means of announcing and promoting, draws many other interested participants.

Mediterranean Union